

On the Line

Designed by Stacey Day
Featuring *Laundry Day* by Whistler Studios

SIZE: 60" x 72"

FREE
PROJECT



THIS IS A DIGITAL REPRESENTATION OF THE QUILT TOP, FABRIC MAY VARY.

PLEASE NOTE: BEFORE MAKING YOUR PROJECT, CHECK FOR ANY PATTERN UPDATES AT WINDHAMFABRICS.COM'S FREE PROJECTS SECTION.



On the Line

KEY	FABRIC	SKU	YD	CUTTING INSTRUCTIONS
A		42416-X Multi	1	(6) 5" x WOF strips
B		42417-2 White	1/4	(2) Template 1, right side up (1) Template 1, right side down
C		42417-3 Pink	1/8	(2) Template 2
D		42418-1 Blue	1/8	(2) Template 2
E		42418-2 White	1/2	(6) 2" x WOF strips
F		42418-3 Pink *Includes Binding	5/8	(2) Template 2 (8) 2 1/4" x WOF strips for binding
G		42419-1 Blue	1/4	(2) Template 3
H		42419-3 Pink	1/8	(2) Template 2
I		42420-1 Blue	1/4	(2) Template 3
J		42420-4 Yellow	1/4	(2) Template 3
K		42420-5 Green	1/8	(1) Template 2
L		42421-4 Yellow	1/4	(2) Template 3
M		42421-5 Green	1/4	(2) Template 3
N		40171-23 Blue *Artisan Cotton	3	(2) 30 1/2" x 48 1/2" rectangles
O		37098-12 Chalk *Palette	1/4	Cut 1/2" strips on the bias. Sew together with diagonal seams and press to create 222" of 1/4" single fold bias tape.
P		37098-08 Taupe *Palette	1/8	(40) Template 4
		Backing	4	
				68" x 86" Piece of Batting

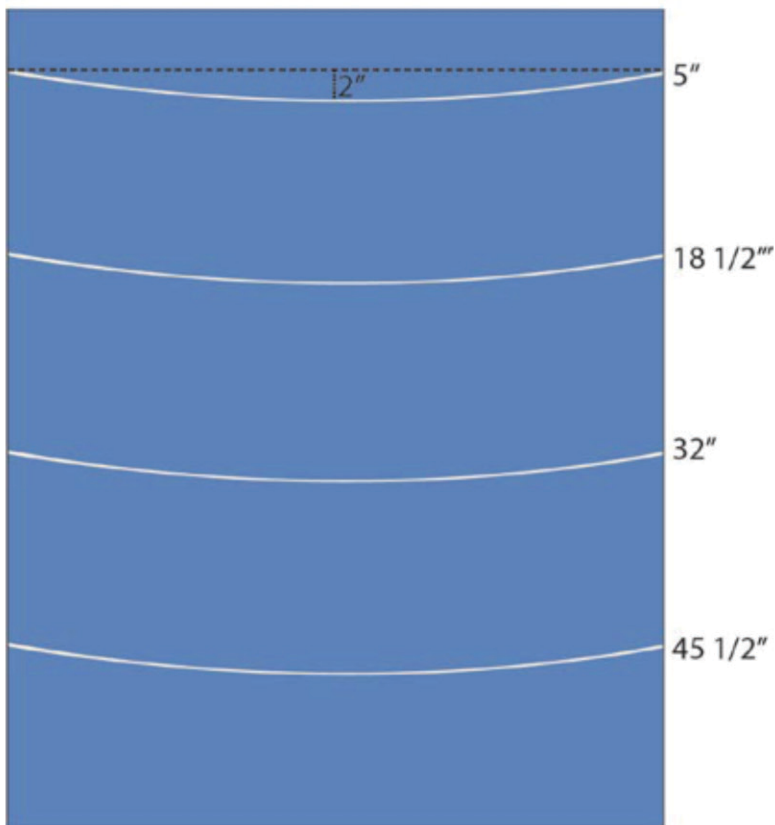
Template 1 must be cut from a single layer of fabric. Templates 2 - 4 can be cut from a double layer of fabric if desired.



On the Line

Sewing Instructions:

1. Sew the **Fabric N** 30 1/2" x 48 1/2" rectangles together to make the background 48 1/2" x 60 1/2". Mark the sides of the background at 5", 18 1/2", 32", and 45 1/2".
2. Cut **Fabric O** bias tape into (4) 55 1/2" strips of 1/4" single fold bias tape.
3. Pin either end of a **Fabric O** strip to the 5" marks. Arrange the strip in a curve, so that the center reaches about 2" below the marks. Pin in place. Repeat for the remaining strips and marks. Sew the strips to the background fabric, stitching along both edges of the strips, to make the clothes lines.



4. Pin the Template 1, 2, 3 pieces on the first clothes line row as shown in the layout diagram, matching orientation and prints. The Template 2 and 3 pieces are 3/4" from the edge of the quilt, and pieces are spaced approximately 1-1/2" to 2" apart on each line.



On the Line

5. Appliqué the pieces to the background using the preferred appliqué stitch. Repeat for the remaining pieces, one clothes line at a time.
6. Pin a pair of Template 4 pieces 1/2" in from the corners of each Template 2 and 3 piece. Appliqué them to the quilt top.
7. Cut (1) **Fabric E** 2" x WOF strip in half and sew each half to a **Fabric E** 2" x WOF strip. Trim to 2" x 60 1/2" and sew to each side of quilt center. Sew remaining **Fabric E** 2" x WOF strips together and cut in half. Trim to 2" x 51 1/2" and sew to the top/bottom of quilt center.
8. Cut (4) **Fabric A** 5" x WOF strips together in pairs. Trim to 5" x 63 1/2" and sew to each side of quilt center. Sew each of the trimmed ends to the remaining (2) **Fabric E** 5" x WOF strips. Trim to 5" x 60 1/2" and sew to the top/bottom of quilt center.

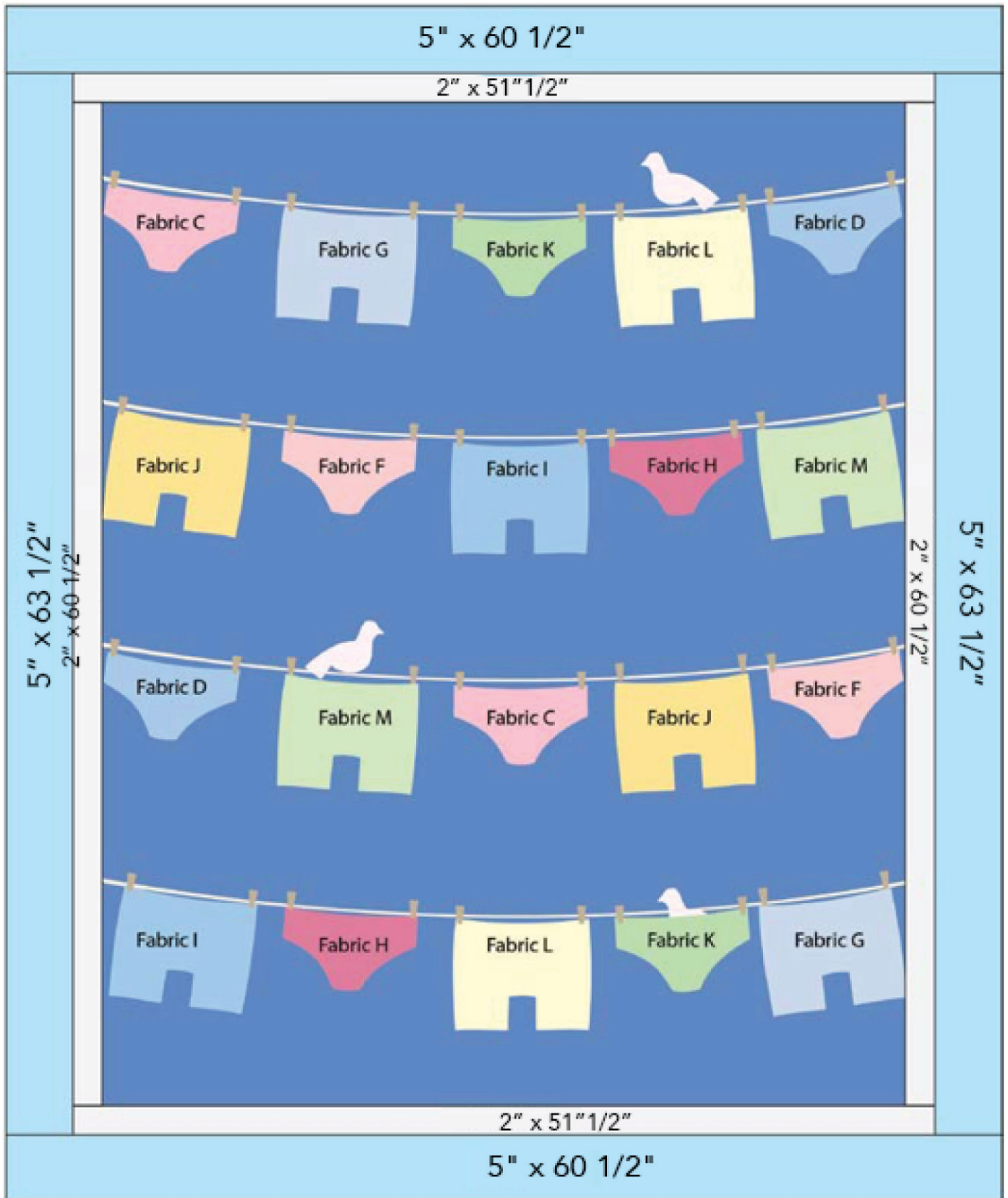
Refer to diagram on next page.

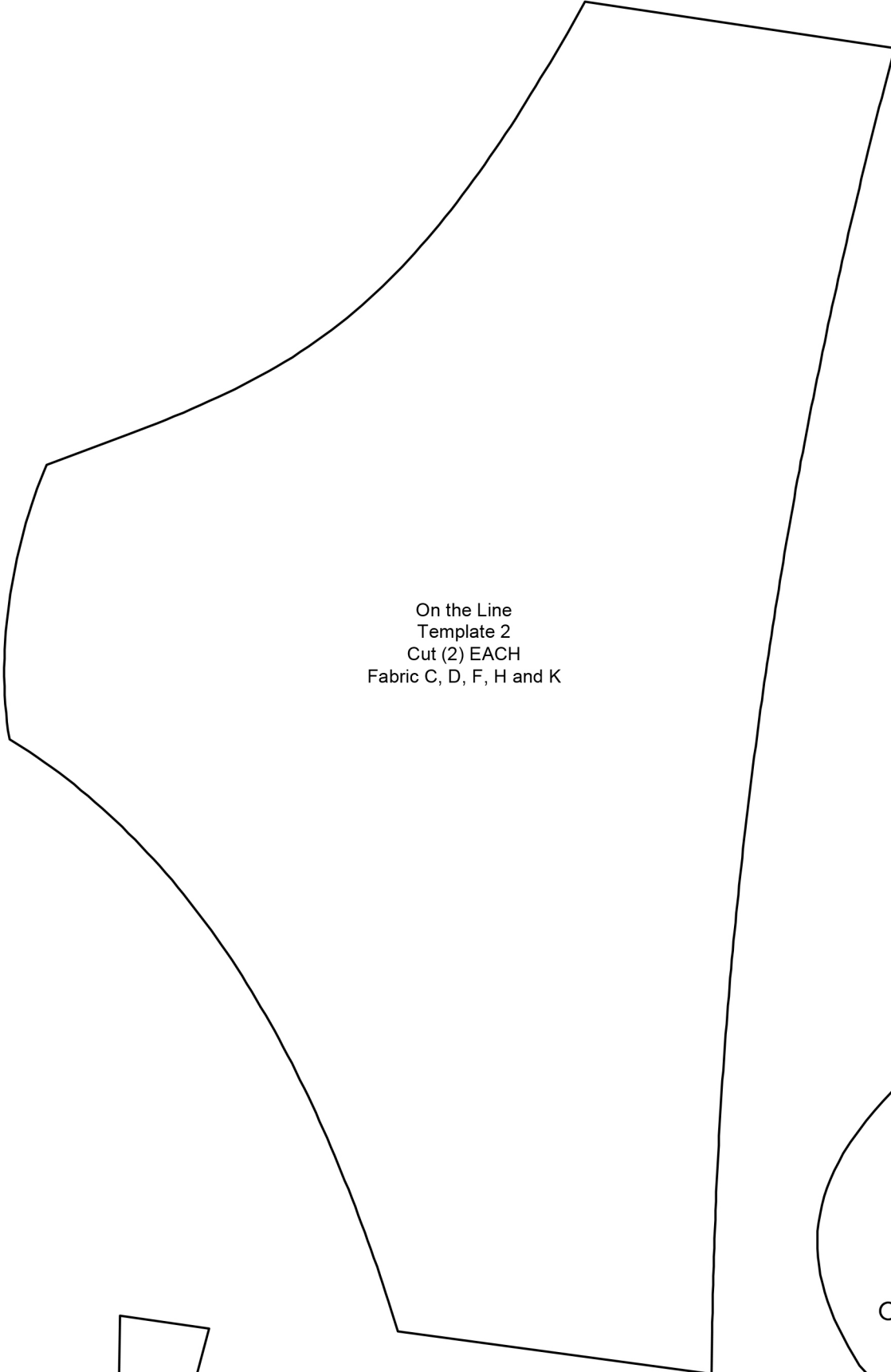
Finishing

1. Make a backing approximately 68" x 80"
2. Layer the backing right side down, batting, and quilt top right side up. Baste the layers together and quilt as desired. Trim excess batting and backing even with the quilt top.
3. Piece the (8) 2 1/4" x WOF **Fabric F** strips using diagonal seams to make a continuous binding. Sew the binding around the quilt top. Turn the binding to the back and secure in place by hand or maching. Label and enjoy.

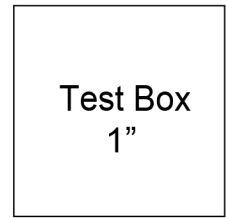


On the Line

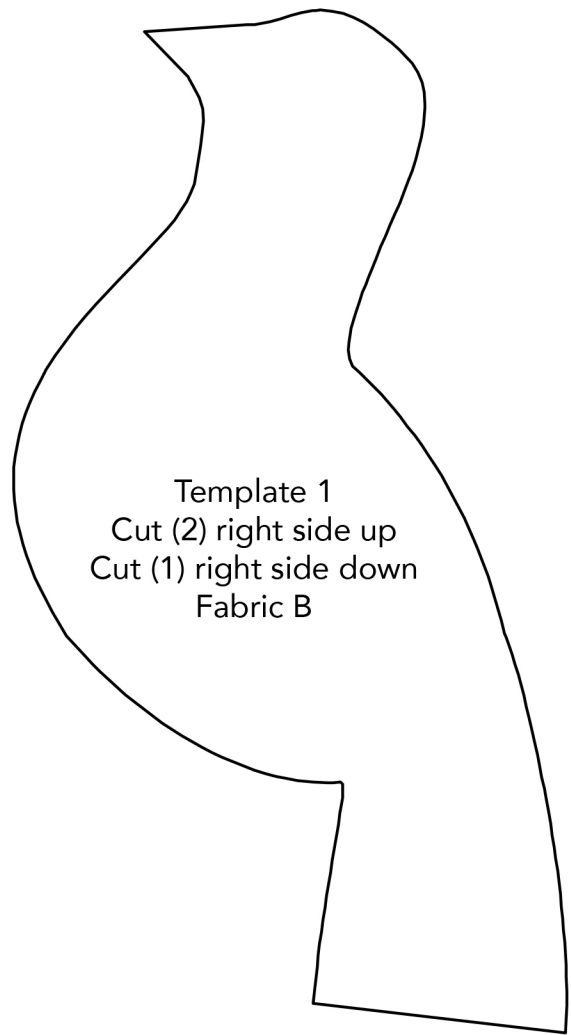




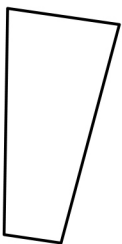
On the Line
Template 2
Cut (2) EACH
Fabric C, D, F, H and K



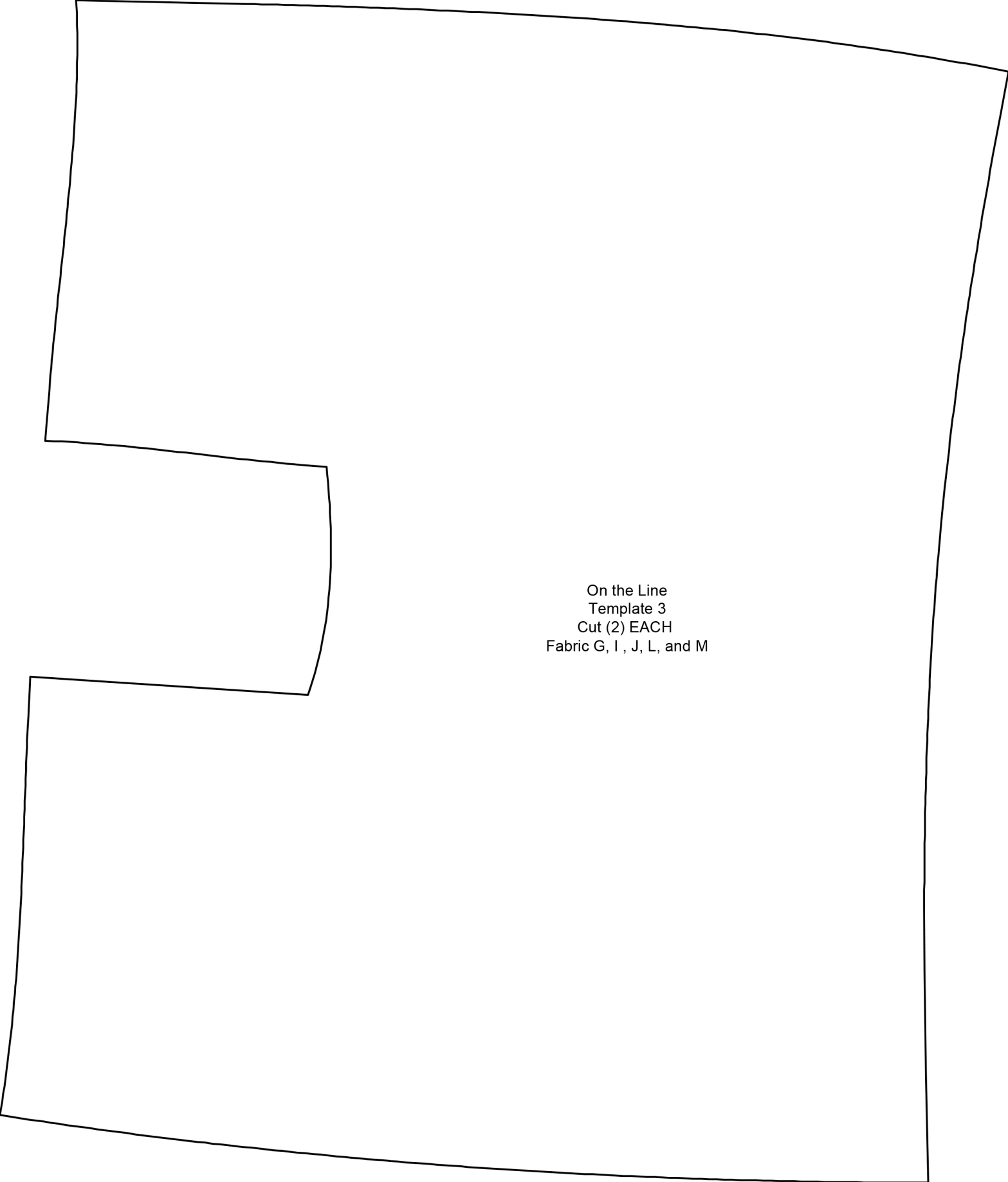
Test Box
1"



Template 1
Cut (2) right side up
Cut (1) right side down
Fabric B



On the Line
Template 4
Cut (40) Fabric P



On the Line
Template 3
Cut (2) EACH
Fabric G, I, J, L, and M

Test Box
1"